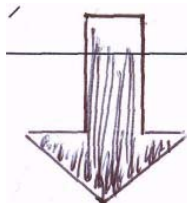
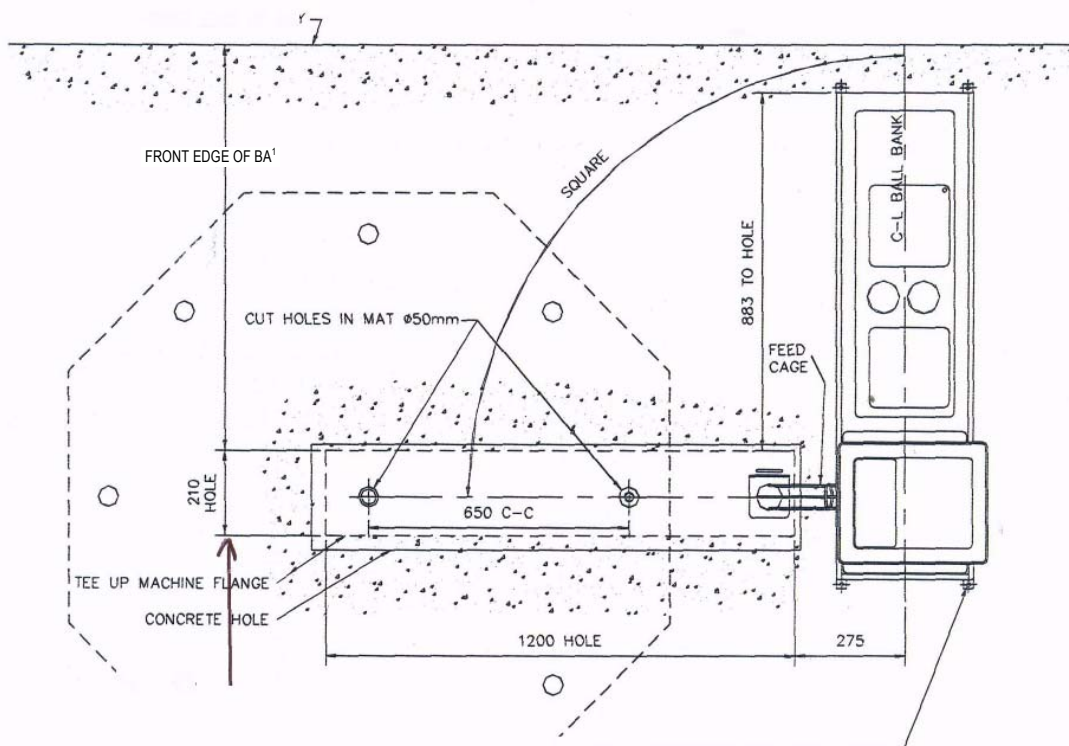


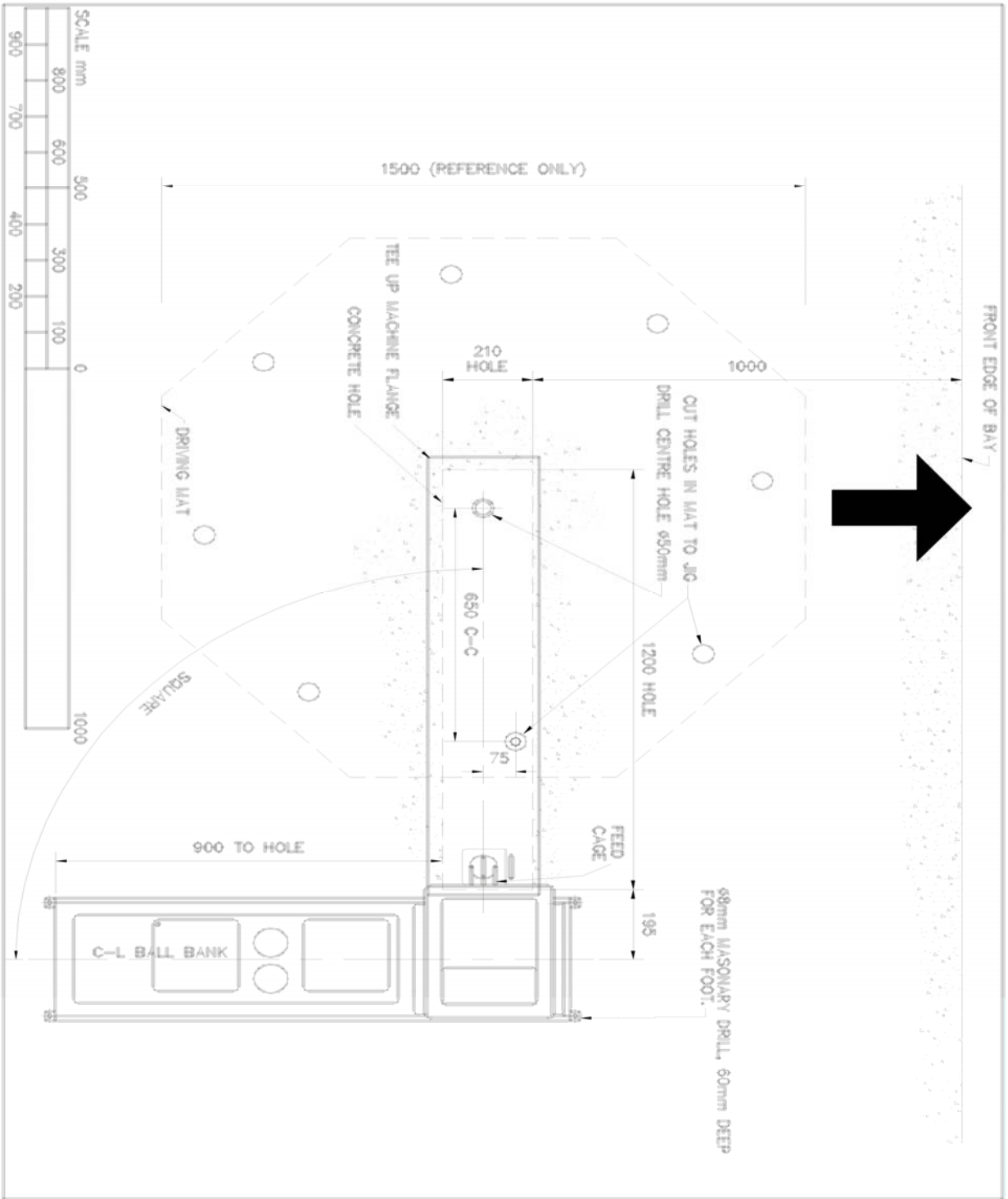
TEE UP Ptv. Ltd.

INSTALLATION PROCEDURE

1. Clear the working area.
2. Position Ball Bank inside driving bay.
3. Mark out hole to layout
4. Remove Ball Bank and cut hole with concrete saw. Dig out hole to a depth of 280mm minimum.
5. Place Tee Up Machine in hole.
6. Mount wire Feed Cage on Tee Up Machine.



LAYOUT - SITE PLAN VIEW



1. SELECT POSITION FOR INGROUND UNIT AND BALL BANK.
2. PREPARE HOLE TO ACCEPT INGROUND UNIT , ALLOWING THE INGROUND TO SIT IN OPENING SUPPORTED BY HANGING FROM TOP PLATE OF UNIT , ENSURE THAT IT FITS FREELY AND THAT THE DEPTH OF THE OPENING IS 50 mm. DEEPER THAN UNIT AND THAT THE OPENING DOES NOT HOLD WATER .
3. PLACE UNIT INTO PREPARED HOLE .
4. FIT BALL RUNNER TO BALL BANK BY INVERTING BALL BANK , THEN TURN BALL BANK RIGHT WAY UP AND REMOVE 4 PHILIPS SCREW FROM OPEN END OF BALL BANK AND FIT HOPPER BY LINING UP PRE DRILLED HOLES USING REMOVED SCREWS .
5. REMOVE 2 PHILLIPS HEAD SCREWS FROM INGROUND UNIT .
6. SIT BALL BANK IN POSITION AND CONNECT BALL RUNNER FROM BALL BANK TO INGROUND UNIT , SECURE WITH 2 PHILLIPS HEAD SCREWS TO INGROUND UNIT .
7. ADJUST BALL BANK FEET SO BALL BANK IS LEVEL OR SLIGHTLY DOWN HILL AWAY FROM HOPPER END .
8. SECURE 4 FEET OF BALL BANK TO BASE OF RANGE WITH FIXING PROVIDED - TYR TO KEEP FEET AT RIGHT ANGLE TO BALL BANK FOR EXTRA STABILITY.
9. REMOVE POLYSTYRENE COVER FROM GANG NAIL PLATE FIT MAT OVER INGROUND UNIT (NOTE HOLES SHOULD HAVE BEEN PREDRILLED IN MAT WITH THE APPROPRIATE TEMPLATE FROM REAR OF MAT SO THAT HOLES WILL LINE UP) STAND ON THE MAT AROUND PEDAL TO PRESS MAT ONTO GANG NAIL PLATE .
10. PLACE AT LEAST 10 BALLS INTO HOPPER TO TEST BALL ROLL OPERATION AND BALL LIFT ON TEE .